

# BRINGING IT TOGETHER.

## GeoMedia WebMap Publisher

### Publish Without Programming

For enterprises, the potential gains of sharing data from the corporate geographic information system (GIS) with employees and customers over the Web are compelling. GeoMedia® WebMap Publisher is a product that lets GIS professionals take full control of this process. It offers the powerful functionality of a GeoMedia WebMap or GeoMedia WebMap Professional Web site, with an interface that requires no programming knowledge. Using GeoMedia WebMap Publisher, it is actually possible to create a professional Web site in as little as a few hours.

GeoMedia WebMap Publisher consists of a publishing tool for GeoMedia that is used to design the Web site and store the definition in a metadata database. Then the GeoMedia WebMap Publisher server application, based on either GeoMedia WebMap or GeoMedia WebMap Professional, reads the data and presents the site to users.

#### Take advantage of the familiar GeoMedia interface.

GeoMedia WebMap Publisher uses a simple, menu-driven interface within the familiar GeoMedia environment to configure the Web site design. This allows you to set even the most advanced features easily, including queries, display options, and true scale plotting.

Once complete, the Web site configuration is exported and is ready to use simply by clicking the Publish button. All of the information needed to define the Web site is saved into the database, which is read by GeoMedia WebMap Publisher's Web server application.

#### Produce professional results with a sophisticated Web application.

After reading the contents of the database, the Web server application presents a professional and attractive GeoMedia WebMap or GeoMedia WebMap Professional site. And the process is dynamic — users can bring published maps back into GeoMedia, make changes, re-publish, and have the Web application reflect these changes instantly.

Any number of completely individual vector or raster maps can be generated to meet different user and departmental requirements. For example, a GIS user with administrator skill level could create



**GeoMedia**  
**WebMap**  
**Publisher**

cadastral and base maps for different departments and make them available by grouping them into user profiles and topics. Password protection could also be used to ensure a secure site.

### Select from powerful functionality.

Simple to use does not mean simplistic functionality. The following is a selection of standard GeoMedia WebMap Publisher functionalities. Users can also create customized tools.

- *Zooming and viewing functions*, such as standard zooming and panning and more advanced scale bars and true scale display
- *Advanced queries*, such as *find street* or *find address*
- *Reports* via a variety of spatial area or attribute selections with *pinning* to view the location of a reported feature
- *Measuring tools*, such as measuring distance between two points or an area within three or more points, including snapping
- *Advanced printing to scale* with user-definable legends and marginalia

### Accomplish work more efficiently with data independence.

Based on GeoMedia WebMap, GeoMedia WebMap Publisher is an open and scalable GIS product that is data format independent. It reads Oracle®, Microsoft® SQL Server, Microsoft Access, ArcInfo, ArcView, MicroStation®, MapInfo, AutoCAD, MGE and FRAMME™ data directly, without translation.

### Software requirements

- GeoMedia WebMap 5.0 or GeoMedia WebMap Professional 5.0 or later
- Internet Explorer 5.0 or Netscape Navigator 4.7 or later

## The Intergraph Solution

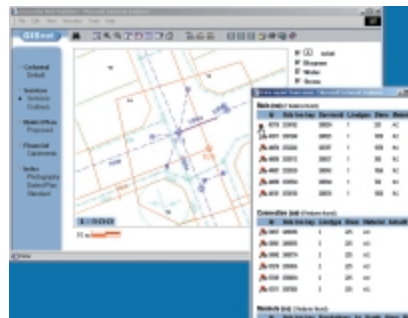
With more than 30 years of technology innovation to its credit, Intergraph Mapping and Geospatial Solutions understands the business challenges customers face every day. Our unique combination of pioneering technology and comprehensive professional services makes Intergraph the leading provider of industry-specific solutions for Geospatial Resource Management, Land Information Management, Commercial Photogrammetry and Remote Sensing, Geospatial Intelligence, and Geospatial Data Management and Cartography.

Intergraph customers can be found around the world in local, regional, and national government entities; transportation and mapping agencies; utilities and communications companies; photogrammetry organizations; the military; educational institutions; and more. Discover how Intergraph's geospatial solutions can help you solve your problems and meet your enterprise goals.

### Proven customer satisfaction

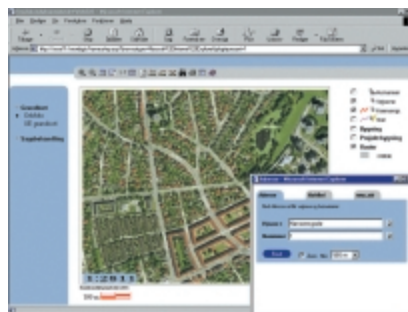
GeoMedia WebMap Publisher gets positive reviews from highly satisfied customers because of its ease of use, fast and painless implementation, and professional results.

**Manukau City Council, New Zealand:** Making GIS data accessible to 500 council intranet users



*"We were very clear on our specifications," says Manukau City Council's Customer Information Manager Abinesh Krishan. "We wanted an out-of-the box product with an open, scalable system that would allow us to optimize the delivery of spatially enabled content to council desktops. Within the council, the project has had a significant positive impact, and we've received brilliant feedback from staff. We've been able to improve customer service and also refocus our specialist GIS staff on high-end analysis."*

**City of Copenhagen, Denmark:** Creating a common platform across departments



*"GeoMedia WebMap Publisher provides us with numerous advanced tools that make it a snap to create proper cartographic maps," says Niels-Aage Kirketerp, GIS manager of the Survey, Cadastre and Mapping Department. "We don't have to do any programming to allow the users to access our data quickly and easily. Whether it's on-screen or in printed form, we can provide true scale maps upon request. Presently we are establishing a joint GIS portal. This will provide the city with a common platform to share Web setups and data."*



Visit [www.ingr.com/international/](http://www.ingr.com/international/) to locate the sales office nearest you, and learn more about GeoMedia WebMap Publisher.

