

BRINGING
IT TOGETHER.

**GeoMedia
PublicWorks Manager**

Manage your public works infrastructure network

It is a formidable challenge to manage a public works department and deliver water and wastewater service to thousands – perhaps even millions – of customers 24 hours a day, 365 days a year. It is not unusual to find a city with 200,000 water and sewer pipe segments, more than 30,000 water valves, and 50,000 manholes. With residents and business relying on them to administer such complex delivery systems, public works agencies need dependable tools that will help build, analyze, and maintain their infrastructure networks.

Put GeoMedia® technology to work.

GeoMedia technology from Intergraph offers the perfect platform for public works asset management, with the flexibility and scalability to meet these requirements. Based on this technology, GeoMedia PublicWorks Manager helps you successfully manage all aspects of your infrastructure – from project planning to capital expenditures analysis to design and implementation. Real-life features depicted in your maps behave intelligently when edited or placed, enabling you to get everything in the right place from the very beginning.

With GeoMedia PublicWorks Manager, you can meet critical agency goals – improve response time, use your personnel effectively, make data accessible to all who need it, eliminate redundant efforts, and, most importantly, satisfy your customers with dependable service.

Share data enterprisewide.

Public works departments typically share data with many different agencies. Creating an accurate and secure enterprise information management environment makes the data available to all. With GeoMedia technology, your departments can control their own data while allowing other departments easy access to the data. Because GeoMedia provides open data structures, you get maximum usage from your data assets. The software can retrieve business and project data that is required for analysis from virtually any standard database, GIS, or CAD format within the



GeoMedia

INTERGRAPH
Mapping and Geospatial Solutions

enterprise. Options include Oracle®, Microsoft® Access, Microsoft SQL Server, IBM® DB2®, MGE, ArcInfo coverages, ArcView shape files, and DWG and DGN files.

Get intelligent tools for the job.

GeoMedia PublicWorks Manager is an industry-specific product that runs in conjunction with GeoMedia Professional, providing advanced capabilities.

Network validation gives you a powerful tool to locate fittings and pipes in the network where the predefined rules have been violated. The system will notify you, for instance, if a water tee isn't connected to the prescribed number of mains or if that tee is not snapped to the endpoint of the main.

Advanced feature modeling enables you to model your assets in a real-world fashion. You can define feature relationships and behaviors that will increase operator productivity and reduce costly data errors. For example, define the types of fittings that can be connected to a water main when you create the feature model. Rules-based digitizing and editing will then prevent the operator from placing inappropriate features in the network.

Use *network tracing* to visualize the flow of water in the system and solve specific operational problems. This could be finding open valves in the water distribution system in order to isolate a break in a water main, or tracing the sewer system after a toxic spill to locate and solve the problem quickly.

The *dimensioning system* provides several types of definable dimensions that make views and plots much more readable and relevant. Since the dimensions are associative, any modification to the geometry will automatically update the displayed text. If the geometric dimension is not exactly what you need displayed, you can easily override it with a user-defined value.

Bridge the gap between technology and productivity.

Providing a comprehensive set of services for the open computing environment, Intergraph Mapping and Geospatial Solutions helps you get the most from your investment. Intergraph's experienced staff and consultants deliver professional services that include system integration, consulting, project services, and implementation.

GeoMedia: Open from the start

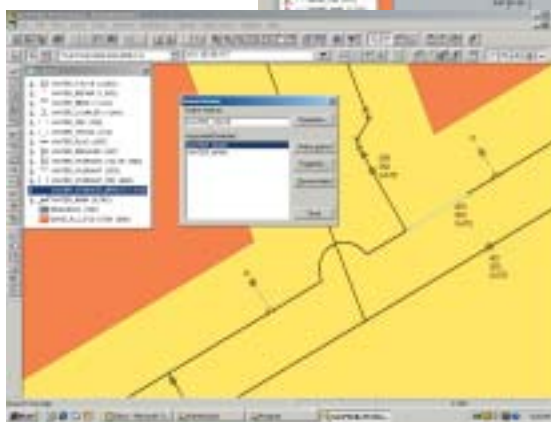
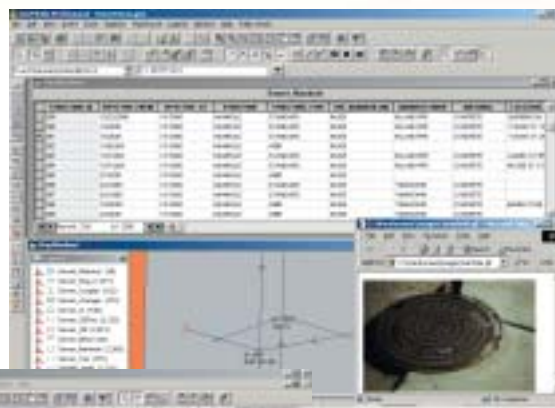
As a founding and principal member of the Open GIS Consortium (OGC), Intergraph is a visible force in ongoing OGC initiatives for industry standards, and spearheads interoperability in the GIS and IT marketplace. Intergraph Mapping and Geospatial Solutions is committed to open systems solutions and data interoperability.

The Intergraph Solution

With more than 30 years of technology innovation to its credit, Intergraph Mapping and Geospatial Solutions understands the business challenges customers face every day. Our unique combination of pioneering technology and comprehensive professional services makes Intergraph the leading provider of industry-specific solutions for Geospatial Resource Management, Land Information Management, Commercial Photogrammetry and Remote Sensing, Geospatial Intelligence, and Geospatial Data Management and Cartography.

Intergraph customers can be found around the world in local, regional, and national government entities; transportation and mapping agencies; utilities and communications companies; photogrammetry organizations; the military; educational institutions; and more. Discover how Intergraph's geospatial solutions can help you solve your problems and meet your enterprise goals.

Dependability is a key requirement for public works agencies. GeoMedia PublicWorks Manager puts the information you need right at your fingertips by clearly and efficiently displaying asset information.



Using GeoMedia PublicWorks Manager, you can define the types of fittings that can be connected to a water main. Rules-based digitizing and editing then prevent inappropriate features from being placed in the network.



Visit www.ingr.com/international/ to locate the sales office nearest you, and learn more about GeoMedia PublicWorks Manager.

INTERGRAPH
Mapping and Geospatial Solutions