

BRINGING
IT TOGETHER.**GeoMedia Parcel Manager****Leading-edge solutions
for parcel and boundary
maintenance workflows**

Land information is not carved in stone. Every day, property is bought and sold, mineral rights are leased, land values change, and areas are rezoned. Agencies around the world are attempting to keep up with this wealth of ever-changing information and provide it – up to date and accurate – both within the enterprise and to the general public.

Implement modern land management.

GeoMedia® Parcel Manager delivers configurable and customizable functionality for parcel and boundary maintenance. Commands and workflows specifically tailored for cadastral and property mapping industries enable you to efficiently collect and maintain parcel boundary and related land information in a nonproprietary database environment.

GeoMedia Parcel Manager is designed for surveyors, tax mappers, assessment officers, data capture and conversion contractors, cities and utilities, national cadastral agencies, military organizations, and others who need to create and maintain land information.

Discover the right tools for the job.

In addition to land information system (LIS)-specific APIs and functionality, GeoMedia Parcel Manager provides the following capabilities:

Proportioning geometry

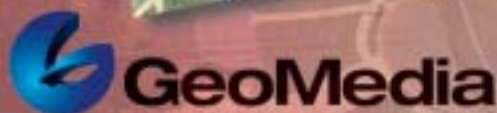
Information in LIS databases often differs from the actual survey plans. Proportioning capabilities make it easy to reconcile the accurate survey plan with the less accurate existing geospatial data.

Coordinate geometry (COGO)

A database-centric COGO capability transforms subdivision plans and metes and bounds descriptions into GIS features. Surveys, traverses, and boundary data entered into the system are persisted in the COGO database and are available for online review, reporting, and analysis.

Data integration

The software can retrieve data from virtually any Geographic Data Objects (GDO)-compliant data server, including Oracle®, Microsoft® Access, Microsoft SQL Server, MGE, ArcInfo, and ArcView. Data from disparate databases can be integrated into a single environment – no translation required.



Parcel numbering and labeling

The software supports the most common numbering systems and provides the tools to efficiently label and annotate parcel maps.

Property merge and split

Auto-validate, analyze, and apply changes – splits, merges, deletes, and inserts – to the parcel boundary fabric. Perform appropriate data-management tasks, such as retiring a parcel or assigning new ownership. When this capability is used in conjunction with GeoMedia Transaction Manager, organizations can retain the complete history of all land information edits.

Survey data integration and parcel fabric adjustment

Rich functionality and workflows incorporate new survey information and adjust both existing and new information. Database-centric adjustment definition and management allow storage of adjustment parameters in any supported database.

Plat/map book generation

Batch processing capabilities make map production easy. The staff can efficiently annotate parcel maps, as well as manage and produce map books.

Take advantage of the power of GeoMedia technology.

Built on GeoMedia Professional, GeoMedia Parcel Manager employs powerful tools that work to your advantage.

- Use intelligent capture and editing tools.
- Add intelligence to features by integrating graphics with attribute data.
- Combine the power of GeoMedia's spatial technology with a robust CAD-like drafting environment.
- Scale a solution that best fits the size and resources of your enterprise.

Bridge the gap between technology and productivity.

Providing a comprehensive set of services for the open computing environment, Intergraph Mapping and Geospatial Solutions helps you get the most from your investment. Intergraph's experienced staff and consultants deliver professional services that include system integration, consulting, project services, and implementation.

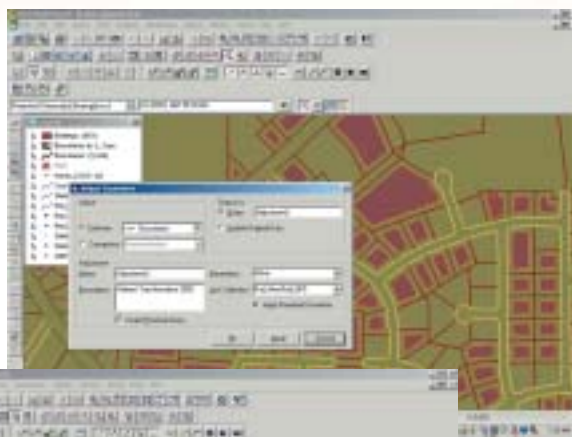
GeoMedia: Open from the start

As a founding and principal member of the Open GIS Consortium (OGC), Intergraph is a visible force in ongoing OGC initiatives for industry standards, and spearheads interoperability in the GIS and IT marketplace. Intergraph Mapping and Geospatial Solutions is committed to open systems solutions and data interoperability.

The Intergraph Solution

With more than 30 years of technology innovation to its credit, Intergraph Mapping and Geospatial Solutions understands the business challenges customers face every day. Our unique combination of pioneering technology and comprehensive professional services makes Intergraph the leading provider of industry-specific solutions for Geospatial Resource Management, Land Information Management, Commercial Photogrammetry and Remote Sensing, Geospatial Intelligence, and Geospatial Data Management and Cartography.

Intergraph customers can be found around the world in local, regional, and national government entities; transportation and mapping agencies; utilities and communications companies; photogrammetry organizations; the military; educational institutions; and more. Discover how Intergraph's geospatial solutions can help you solve your problems and meet your enterprise goals.



GeoMedia Parcel Manager's robust geometry adjustment environment is ideal for integrating new data into your parcel fabric or incrementally improving the accuracy of your land base. Proportioning capabilities make it easy to reconcile an accurate survey plan with less accurate existing geospatial data.



Visit www.ingr.com/international/ to locate the sales office nearest you, and learn more about GeoMedia Parcel Manager.

INTERGRAPH
Mapping and Geospatial Solutions