

BRINGING IT TOGETHER. **GeoMedia Image**

Fast and simple desktop image processing



Image processing and analysis are critical elements to national, state, and local governments and commercial customers in industries such as transportation, engineering, urban planning, and utilities. Professionals who use imagery from satellite and reconnaissance sources, aerial survey, or handheld sources to create information in support of day-to-day decision making need to perform fast and simple desktop image exploitation.

GeoMedia® Image provides a full set of image display, enhancement, and manipulation tools that are fully integrated with other GeoMedia products. Powerful tools enable manipulation and display of binary, grayscale, and color images, and raster maps. Using GeoMedia Image, professionals can process and merge vector and image data for their work area.

Process images: enhance, manipulate, analyze, and display.

GeoMedia Image enables you to turn imagery into information — efficiently and cost effectively — to support smart decision making. A full complement of image enhancement tools makes easy work of enhancing, displaying, and manipulating image data. Image commands include display, edit, warp, enhance, and plot.

Image exploitation features enable you to make workflows more efficient. Features include brightness and contrast adjustments, histogram adjustment, pseudo-color, blur and sharpen adjustments, gamma correction, and many more, including:

- Intuitive Microsoft Windows®-based interface
- Native-read support (no conversion required) for industry-standard raster formats
- Native read support for new IKONOS images
- World coordinate system definitions and readouts
- Simultaneous display of color and grayscale images
- Tiled data structure with image pyramids
- Interactive, precision image placement



Display imagery in a GIS window.

GeoMedia Image enables you to insert and control a variety of image formats georeferenced in a GIS window. Advanced registration algorithms and registration guides provide for precision image placement. A choice of image warping techniques provides the most accurate display of imagery combined with overlaid GIS feature data. Load-and-go support (native read — no conversion required) provides for a wide variety of georeferenced image formats:

| | |
|------------|--------------------|
| GeoTIFF | NITF 1.1, 2.0, 2.1 |
| TIFF World | MrSID |
| BMP | JFIF (JPEG) |
| Intergraph | USGS DOQ |

Share maps and images enterprisewide.

The strength of GeoMedia technology lies in its ability to function as a universal geographic client. It solves the problem of disparate data formats and makes it easy to share up-to-date spatial data across borders, industries, and disciplines. With GeoMedia's open architecture and live data integration, you can bring all your image and vector data into a single environment and turn it into valuable information for the enterprise.

Bridge the gap between technology and productivity.

Providing a comprehensive set of services for the open computing environment, Intergraph Mapping and Geospatial Solutions helps you get the most from your investment. Intergraph's experienced staff and consultants deliver professional services that include system integration, consulting, project services, and implementation.

GeoMedia: Open from the start

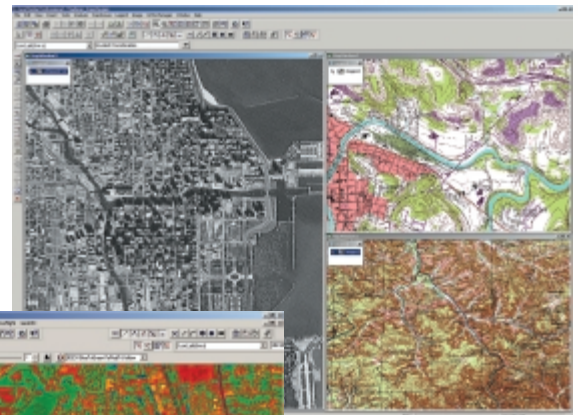
As a founding and strategic member of the Open GIS Consortium (OGC™), Intergraph is a visible force in ongoing OGC initiatives for industry standards, and spearheads interoperability in the GIS and IT marketplace. Intergraph Mapping and Geospatial Solutions is committed to open systems solutions and data interoperability.

The Intergraph Solution

With more than 30 years of technology innovation to its credit, Intergraph Mapping and Geospatial Solutions understands the business challenges customers face every day. Our unique combination of pioneering technology and comprehensive professional services makes Intergraph the leading provider of industry-specific solutions for Geospatial Resource Management, Land Information Management, Commercial Photogrammetry and Remote Sensing, Geospatial Intelligence, and Geospatial Data Management and Cartography.

Intergraph customers can be found around the world in local, regional, and national government entities; transportation and mapping agencies; utilities and communications companies; photogrammetry organizations; the military; educational institutions; and more. Discover how Intergraph's geospatial solutions can help you solve your problems and meet your enterprise goals.

GeoMedia Image provides a full set of image display, enhancement, and manipulation tools, which are fully integrated with other GeoMedia products.



Pseudo-color displays provide the user with tools for interpretation of the image components.



Visit www.ingr.com/international/ to locate the sales office nearest you, and learn more about GeoMedia Image.

