

BRINGING
IT TOGETHER.

GeoMedia-Hansen
Interface

Increase infrastructure management productivity.

Hansen Information Technologies and Intergraph have come together to bring you an asset management and permitting solution for the public works and land management industries. Now you can effortlessly view properties and facilities in GeoMedia from Hansen® V7.5 – and vice versa.

Seamless, bi-directional interface


You can achieve this complete infrastructure management solution with the GeoMedia-Hansen Interface. It gives you a seamless, fully bi-directional solution for managing both the attribute and spatial components of water, wastewater, storm water, and other asset systems. For example, the GeoMedia-Hansen Interface enables you to easily relate the tabular definition of a water valve in your Hansen system to its graphic definition in GeoMedia.

Based on ActiveX/COM, the GeoMedia-Hansen Interface leverages the latest integration technology for the Microsoft Windows® operating system. This ensures that you can safely and quickly relate common infrastructure assets between Hansen V7.5 and GeoMedia.

Easy access between GeoMedia and Hansen V7.5

The GeoMedia-Hansen Interface simplifies your local infrastructure management workflow by making all native GeoMedia and Hansen V7.5 functions available to you from either product – regardless of which is open on your desktop.

For example, from GeoMedia, you can select the infrastructure item you want and choose a simple pull-down command to see the corresponding asset data in Hansen V7.5. Or, if you're working in Hansen V7.5, you can open the inventory asset, lookup, or customer form, select the infrastructure item you want to see, and then click the globe on the Hansen form to open a GeoMedia map view of the item.

 **GeoMedia**

 **HANSEN**
INFORMATION TECHNOLOGIES

INTERGRAPH
Mapping and Geospatial Solutions

Features of the GeoMedia-Hansen Interface

- Bi-directional interface between Hansen V7.5 and GeoMedia or GeoMedia Professional
- Access to GeoMedia from Hansen asset inventory, lookup, and customer forms
- Retrieval of single or multiple selections of GeoMedia GIS data from Hansen
- Support for asset groups
- Automatic spatial filtering of selected areas – no need to load the complete GIS data set
- A graphical interface configuration manager that enables you to set:
 - Hansen assets you want to map to GeoMedia features
 - GeoMedia features that display when you select a Hansen asset type
 - Size of area automatically buffered when an asset element displays in the GeoMedia map view
 - Mapview scale you want to use

Data requirements

To use the GeoMedia-Hansen Interface, a common data element must exist between the GIS data and the Hansen data. You can accomplish this by including the Hansen comkey in the GIS data. You can use spatial data in any format supported by GeoMedia.

Software requirements

The GeoMedia-Hansen Interface requires the following software components:

- GeoMedia or GeoMedia Professional installed on the desktop
- Hansen V7.5 installed on the desktop
- Hansen GIS Link ActiveX/COM interface (available for purchase from Hansen)

Worry-free installation and configuration

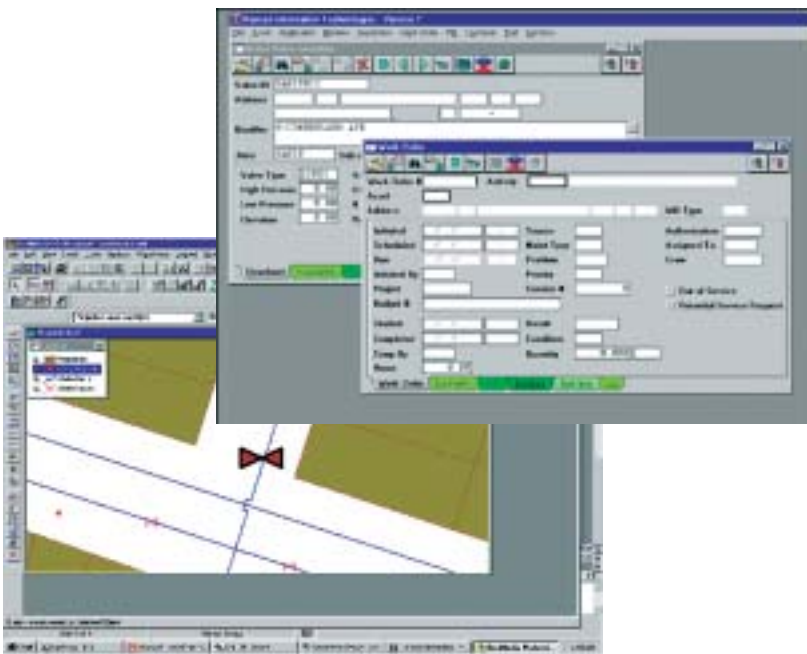
Intergraph's GIS customer care professionals understand the unique needs of your industry. And, with their depth of understanding, they can help you quickly install and configure the GeoMedia-Hansen Interface. For most environments, Intergraph recommends a two-day, on-site installation and training workshop to get you up-and-running immediately.



The GeoMedia-Hansen Interface

Hansen Information Technologies and Intergraph have joined forces to develop an integrated asset management and permitting solution that includes a GIS component. This solution provides a seamless, two-way integration between Hansen and GeoMedia and allows you to work on property/permitting data while reviewing the property or facility within GeoMedia. The primary objectives of the GeoMedia-Hansen Interface are to:

- Allow single or multiple selections of GIS data in GeoMedia to be retrieved in Hansen
- Allow single asset inventory in Hansen to be mapped in GeoMedia, including user-defined retrieval area and related feature display
- Incorporate an administration tool that enables GIS feature and column mapping to Hansen asset and field information



With the GeoMedia-Hansen Interface, you can easily relate the spatial representation of an asset in GeoMedia to its tabular records from the Hansen database.



Visit www.ingr.com/international/ to locate the sales office nearest you, and learn more about GeoMedia-Hansen Interface.

